



Easy Push4™ button to
call your favourite number



With the SH315, SouthWing remains faithful to the needs of the business user who seeks an elegant though discreet design. With several attachment options the headset is comfortable to use with or without an earhook, and can be clipped to your clothes or attached to your phone. The SH315 is part of the SH300 range which includes the SH305 and SH310.

Bluetooth V 1.2
Voice dialling
6h talk time
Easy to use,
carry and store



SH315

Bluetooth® Wireless Headset

Easy **Push4™** button to call your favourite number

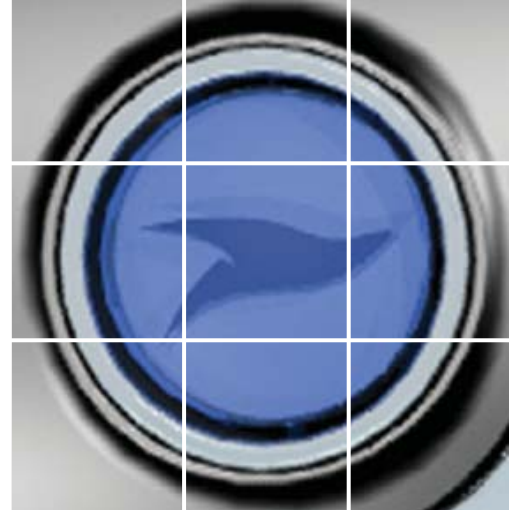
With the innovative **Push4™** button, the SH315 gives you instant access to your favourite number or preferred voice services. Just by pressing the **Push4™** button you are **automatically connected**. The **Push4™** can easily **be reprogrammed** with another specific number of your choice.

FULL SPECIFICATIONS

- **Push4™** favourite number button
- **Bluetooth V 1.2**
- **Voice dialling**
- **6h talk time**
- **Easy to use, carry and store**
- **USB Cable**
- Soft, adjustable earhook
- Lightweight: 11 grams
- Call features: microphone muting, disconnect from phone, automatic call pick-up, last number redialling, transferring call to phone
- 12 ring tones
- Battery level indicator
- Stand-by time: up to 300 hours
- Volume controls
- LED indicator
- Full charging time: 4 hours
- 2 year warranty

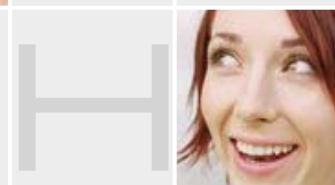
COMPATIBILITY

Compatibility with all Bluetooth phones that support the Headset and hands-free Profiles



PU

SH

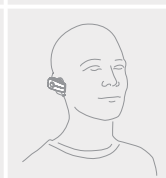
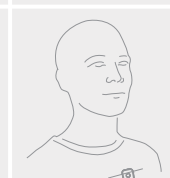
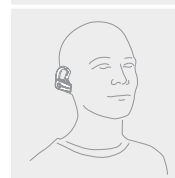


4™

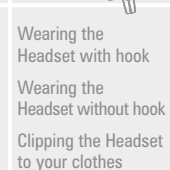
Packaging

The headset comes in a stylish packaging with see-through blister showing headset.

Weight: 11 grams
Dimensions: 12.5 x 17.5 x 6 cm



Wearing the Headset with hook
Wearing the Headset without hook
Clipping the Headset to your clothes



Attaching the Headset to your mobile

Box contents

SH315 Wireless Headset
USB cable

Power supply
User guide
Headset cord