

## Wingman: SouthWing SH505 Configuration and Upgrade Tool (c) Copyright SouthWing S.L. 2006

### Contents

1. Product Information
2. Installing
3. Contacts

## 1. Product Information

Wingman is a Windows application that allows you to easily configure and upgrade your SouthWing SH505 Bluetooth Headset.

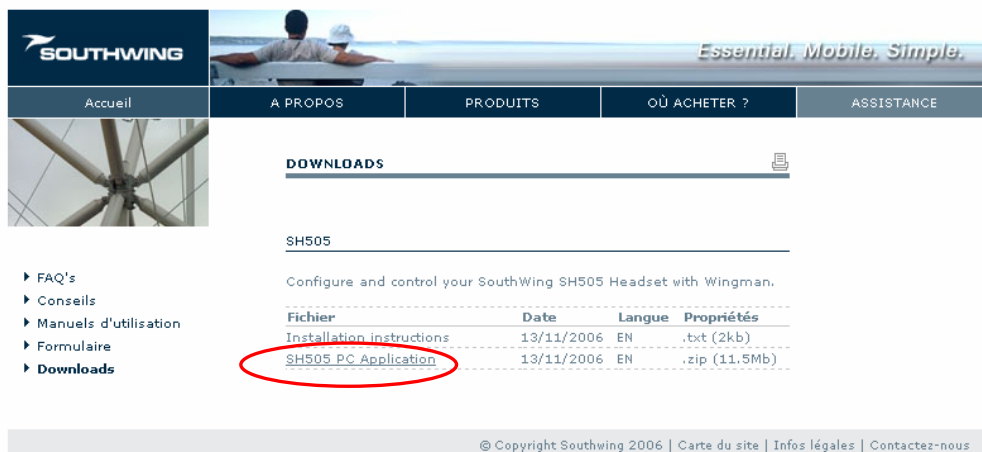
You will be able to:

- \* Configure your Push4 Favourite Number.
- \* Choose between Push4 Favourite and Operator Numbers.
- \* Activate or deactivate the auto-answer feature.
- \* Select the ringtone from among 11 ringtones.
- \* View remaining talk-time.
- \* Upgrade the SH505 software when new versions become available.

## 2. Installing

To install the USB drivers and the Wingman application, please follow these steps.

- a. Download WingmanInstall.zip from [www.south-wing.com/support/downloads](http://www.south-wing.com/support/downloads).



Accueil A PROPOS PRODUITS OÙ ACHETER ? ASSISTANCE

### DOWNLOADS

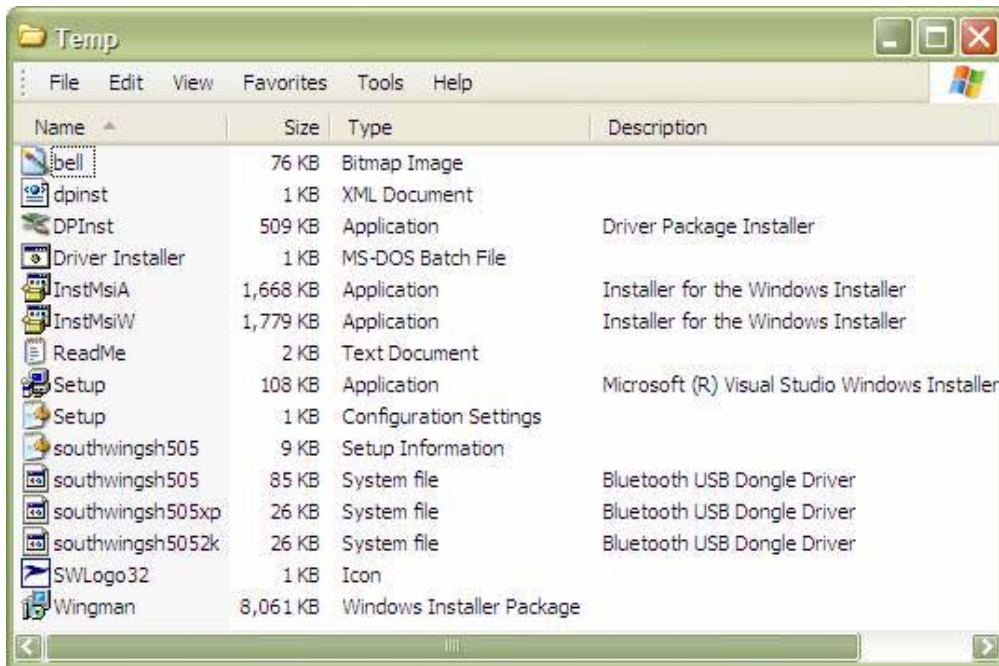
SH505

Configure and control your SouthWing SH505 Headset with Wingman.

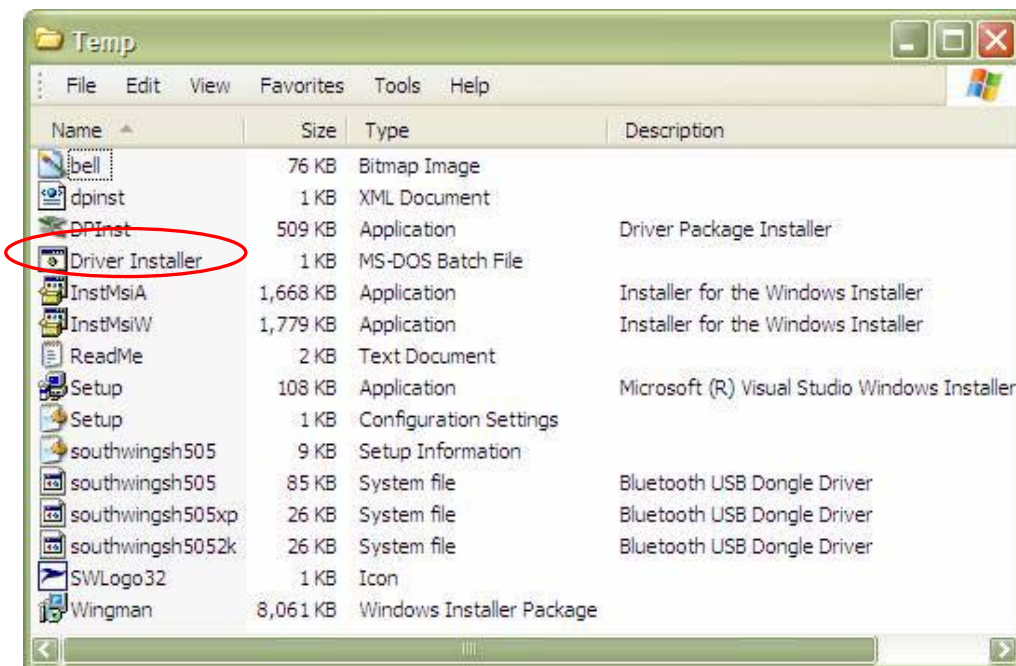
Fichier	Date	Langue	Propriétés
<a href="#">Installation instructions</a>	13/11/2006	EN	.txt (2kb)
<a href="#">SH505 PC Application</a>	13/11/2006	EN	.zip (11.5Mb)

© Copyright Southwing 2006 | Carte du site | Infos légales | Contactez-nous

b. Unzip the file in a temporary directory.



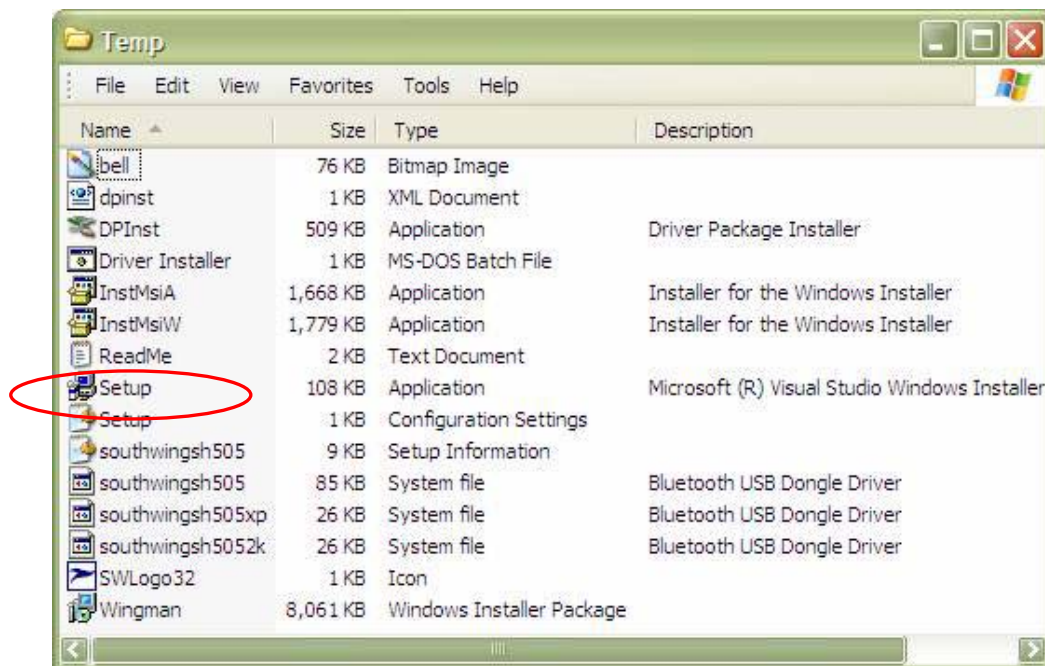
c. Install the USB drivers by double-clicking 'Drive Installer' or 'Driver Installer.bat' in the temporary directory.



- d. Connect the SH505 headset to the PC via the supplied USB cable. Windows will detect the headset and complete the installation of the drivers.



- e. Install the Wingman application by double-clicking 'Setup' or 'Setup.Exe' in the temporary directory.



- f. You will now be able to execute the application by clicking on 'Start/SouthWing/Wingman'

### **3. Contacts**

For technical support, please contact [customer.service@south-wing.com](mailto:customer.service@south-wing.com)